

very nice

*Introducing a  
proud heir to the  
Monaco lineage—  
The Eagle I*

*We cordially  
invite you to step  
into a world of  
spacious luxury  
and refinement.*



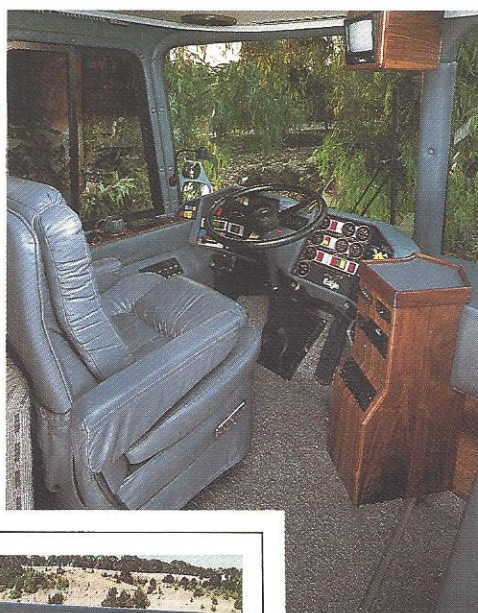
Step into an impressive and expansive 102" of width and full sized headroom *without* sloping windows. This is the *Golden Eagle* bus shell that Monaco has chosen as the foundation of the Eagle I. Recognized throughout the world for its excellence, the *Golden Eagle* has the truest wall in the industry, plus engineering features that provide unexcelled driveability.

Starting with a unique *Torsilastic* independent suspension system that effectively reduces sway and rock, the Eagle I has an amazing 360° turning radius of only 42' (45'6" over bumpers). This handling ease is matched by the most maintenance-free suspension system to be found.

When you combine the advanced *Torsilastic* suspension system with an aerodynamically designed exterior, you find that everything, from the 8V92 TA Detroit Diesel with 475hp, to the HT750 Allison

5-speed automatic transmission, goes better, smoother and with greater fuel economy. No wonder it's been the choice of professionals in the entertainment industry for on-the-road comfort and driving dependability.

In the command cockpit you'll sit level with the living area and enjoy fingertip control of the air-operated coach levelling system, individually controlled windshield wipers and the compression "jake" brake. The luxurious leather seats for both driver and co-pilot have 6-way power controls as well as full swivel.



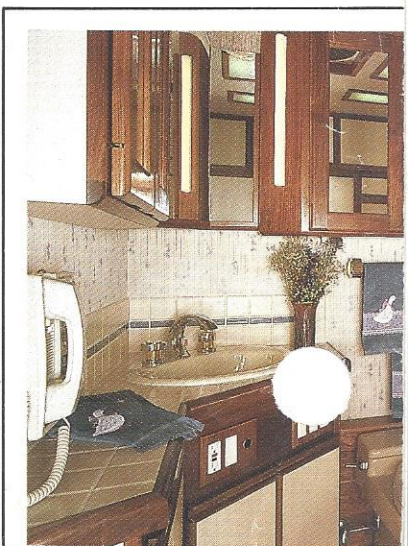
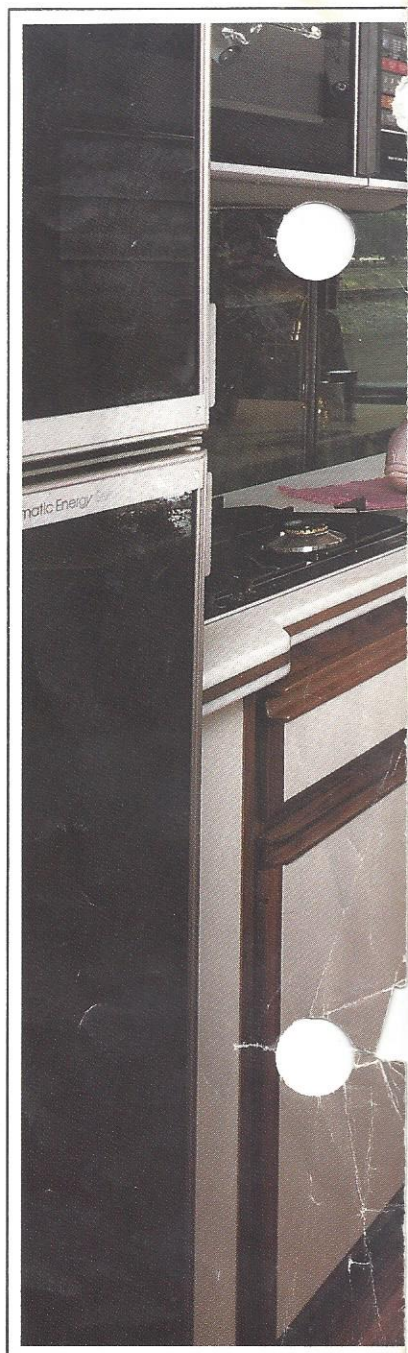
## Specifications

### Cockpit

- Leather driver's seat with 6-way power controls
- Leather "buddy" co-pilot seat with 6-way power controls, full swivel, with air slide forward to same position as driver seat
- Driver's air conditioning, heating and defrost system
- AM/FM cassette stereo w/6 speakers—2 additional in bay area
- CD Player
- Black Bart burglar alarm system
- Built-in Cobra remote radar detector
- Intec 9300 Closed circuit TV monitor for rear viewing
- PMMI musical horns
- 40-channel Cobra handheld CB w/antenna
- Air slide step cover
- Panasonic phone and intercom system
- 19" Panasonic color TV with remote control
- Halon fire extinguisher

**The Eagle I Control Center:** An electro-luminescent instrument panel taken from the latest aerospace technology! Includes rear engine temperature gauge foglight switch, heated side mirror switch, jumpstart powered by coach battery and/or house battery, engine preheat from boiler system, remote spot light control, coach 12v lighting, AM-FM cassette stereo, 40 channel Cobra CB and remote radar detector, plus closed-circuit rear view TV monitor.

**Full size Bathroom/Dressing Suite** with full-length mirrored closets, hand-rubbed cabinetry, imported tile, brass fixtures and even a telephone!







### Decor

- Insulated and padded ceiling w/wool headliner • Coordinating interior/exterior color schemes • Deep pile plush or loop weave carpeting • Sliding thermal pane windows w/screens throughout • Elegant wall coverings • Choice of natural hardwoods in Oak or Walnut and others available on request • Full extension hardware on all drawers • Toe kick and underdeck lighting throughout to provide mood/night lighting • Full sound deadening— $\frac{1}{4}$ " lead-lined insulation between 2 sheets of  $\frac{3}{8}$ " plywood on all interior floors. Additional  $\frac{1}{4}$ " lead lining in bedroom over engine cover & carpet pad • Planked hardwood flooring—galley, side hafts and bathroom • Choice of European (laminate/hardwood trimmed) or natural hardwood cabinetry or combination of both •

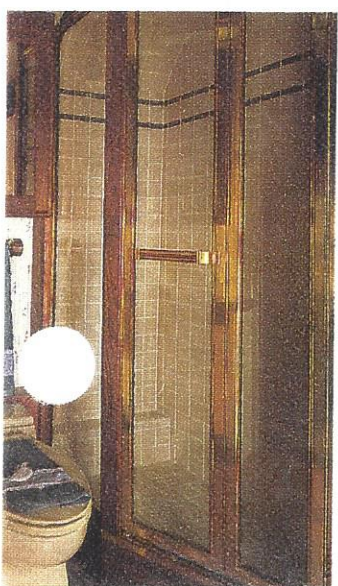
Decora residential light switches in all rooms • Portable Panasonic vacuum cleaner • Security alarm system (inside & outside) • Full facing dinettes in both models

### Salon

- Color-coordinated custom designed sleeper sofa • Leather love seat • Both track lighting on rheostat and indirect lighting • Pleated shades in natural hardwood frames • Built-in beveled glass bar with ice maker

### Galley

- Corian countertops w/molded sink • Broan trash compactor • Dometic RM 3801 AES refrigerator • Sharp microwave/convection oven • 4-burner gas Gaggenau range • Instant hot water dispenser • Nutone food service center w/blender • Dropped ceiling lighting • Planked hardwood floor • Natural hardwood





pantry • Whirlpool dishwasher • Lazy susan rotating storage—C/A only • Individual roll-out pantry shelves—C/A only • European single control faucet w/sprayer • Bronze mirror backsplash—S/A only • Kitchen exhaust through charcoal filter in microwave

## Bathroom

• Ceramic tile countertops w/china sink • Power exhaust fan w/cover—thermostatic controlled • Color coordinated wall covering • Full size Microphor ceramic toilet • Full size tub or shower, depending on model, (w/safety glass and polished brass frame enclosure) • Planked hardwood floor • Mirrored dressing area w/vanity lighting • Panasonic phone and intercom system • Brass/chrome bath fixtures

## Bedroom

• Lighted mirrored wardrobe w/cedar lining • Queensize mattress (twins available) • Custom spread w/pillows • Roman shades w/pleated sheers • Two nightstands w/drawers • Cedar-lined pull-out drawers under bed • AM/FM stereo cassette w/2 speakers • 13" Panasonic color TV w/remote control • Video cassette recorder wired to antenna, landline and both TV's • Amplified video selector • Rear linen/storage closet • Panasonic phone and intercom system • Two bedside swing down reading lamps • Bedside controls—curbside docking lights, generator start/stop/preheat and mood/night lighting • Motion sensor light switch

## Specifications

Model 15 • 102" wide.

8V92TA Detroit Diesel with 475hp • HT750

Series Allison 5 speed automatic transmission

• Torsilastic independent suspension system • 154 gallon fuel tank (40 gallon auxiliary tank available)

## Utilities

Heating and Cooling

• Webasto 40,000 BTU diesel hot water heater/furnace—thermostatically controlled • Three Cruisair 13,500 BTU domestic 110V air conditioning—split system • "Over the road" air conditioning—engine driven • Five 110V electric toe kick heaters—thermostatically controlled • Thermostatically controlled hydronic heat protection for plumbing bay

Electrical and Plumbing

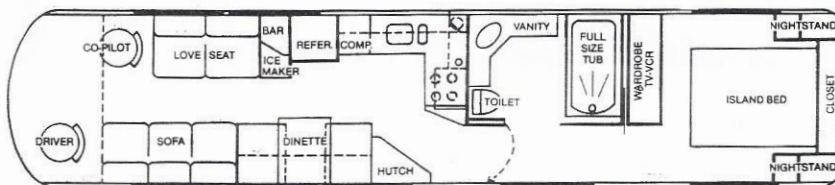
• Eagle has 12V electrical system easing the adaptation to the coach 12V system • 12.5 Kohler diesel generator (water cooled) on air slide rollout w/independent battery • Independent 40 gallon diesel tank for generator • 2000 watt solid state inverter/converter • Six 8D batteries (four on roll-out) • 50 AMP shore service w/adapters • Battery charger/converter • 12V lighting in engine compartment & bays (door activated in bays) • 110V outlets in underbelly storage • One 10 gallon water heater w/over the road heat exchanger • Two 12 volt water pumps • Exterior convenience outlet w/hot and cold running water and paper towel holder • Water filter system • Manual dump valve • 150 gallon fresh water tank • 75 gallon grey water tank • 75 gallon black water tank • 24.5 LP tank • LP gas/smoke detector w/automatic shut off—individual room and bay w/remote alarm in bedroom • City water fill location

## Other Features

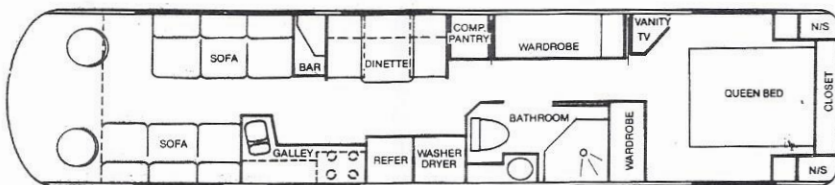
• Remote control spot/floodlight on roof • Hadley airhorns mounted on roof • Polish aluminum exterior • Chrome wheel dress • 75 lb. AC/DC Norcold freezer/refrigerator • Cable TV hook up • Phone landline hook up • Cellular/mobile phone connection • High intensity back-up lights • Back-up alarm • Four docking lights • Curb lights • Chrome trailer hitch receiver • Towing light plug and receptacle • Mud flaps—between drive wheel and bogie • Speaker jacks wired to bay • Omni directional TV antenna w/ remote control • Burglar alarm system on engine and bay doors • Porch light—30 second touch controlled • Fireproof safe with combination lock • Chime door bell system • Intec 9300 Rear closed circuit back-up camera • Fire extinguishers • Carpeted storage bays • One pressurized air hose connector w/ two 25' hoses

## Options

• Zip Dee awning package w/ four chairs • Cellular phone • Tool box on rollout • 3-way Hailer system for external mikeless communication • Hand held shower unit w/ pulsator



BUS CONVERSION — B41101



BUS CONVERSION — 41102

## MONACO COACH CORPORATION

P.O. Box 69

325 East First Street

Junction City, Oregon 97448

(503) 998-1068

Toll Free Outside Oregon:

1 (800) 634-0855

*Monaco's policy of continuous product improvement makes all equipment, standard or optional, capacities, brand names, specifications and model availability, subject to change without notice. We reserve the right to make those changes, but we are happy to verify any item by motorhome serial number.*