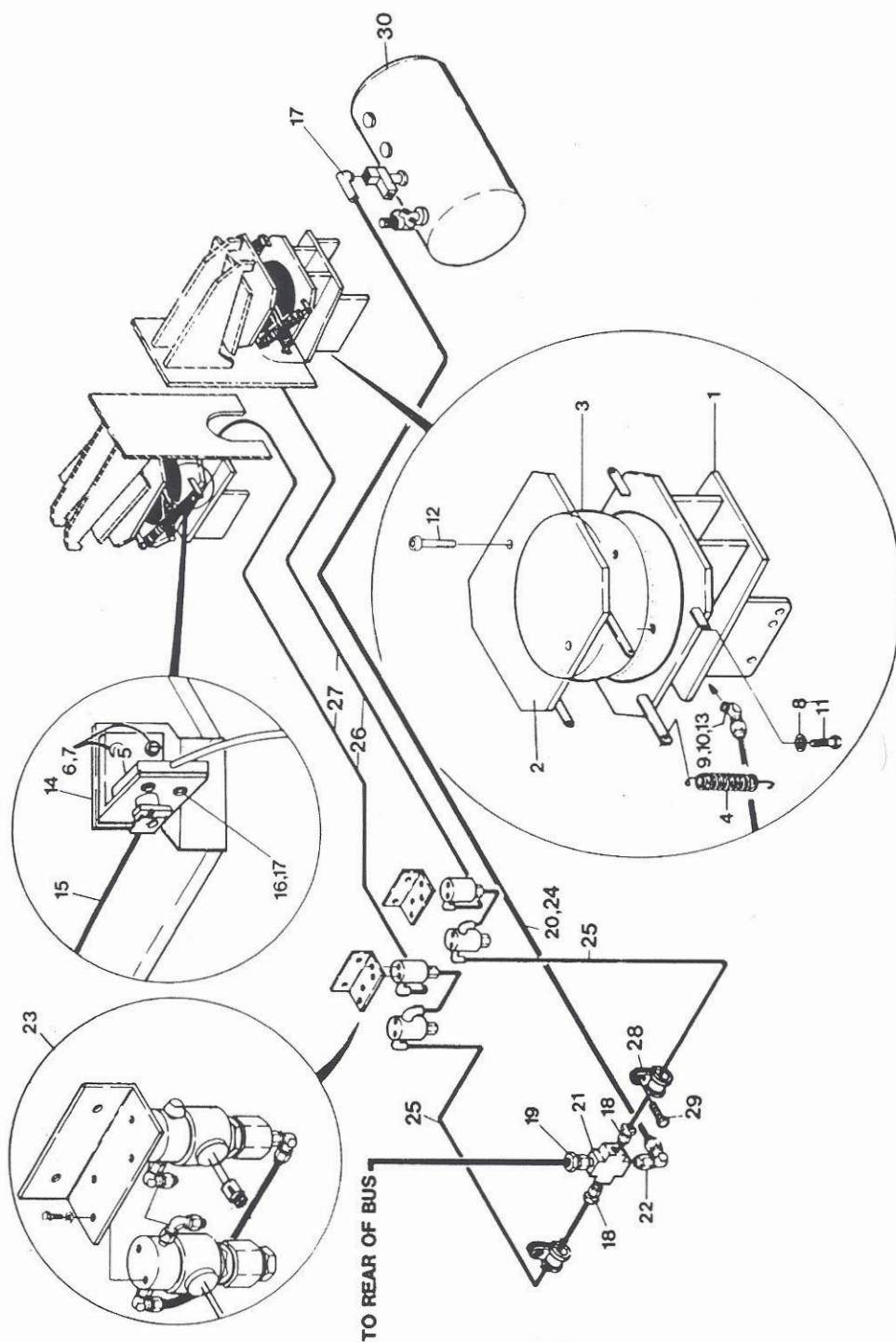


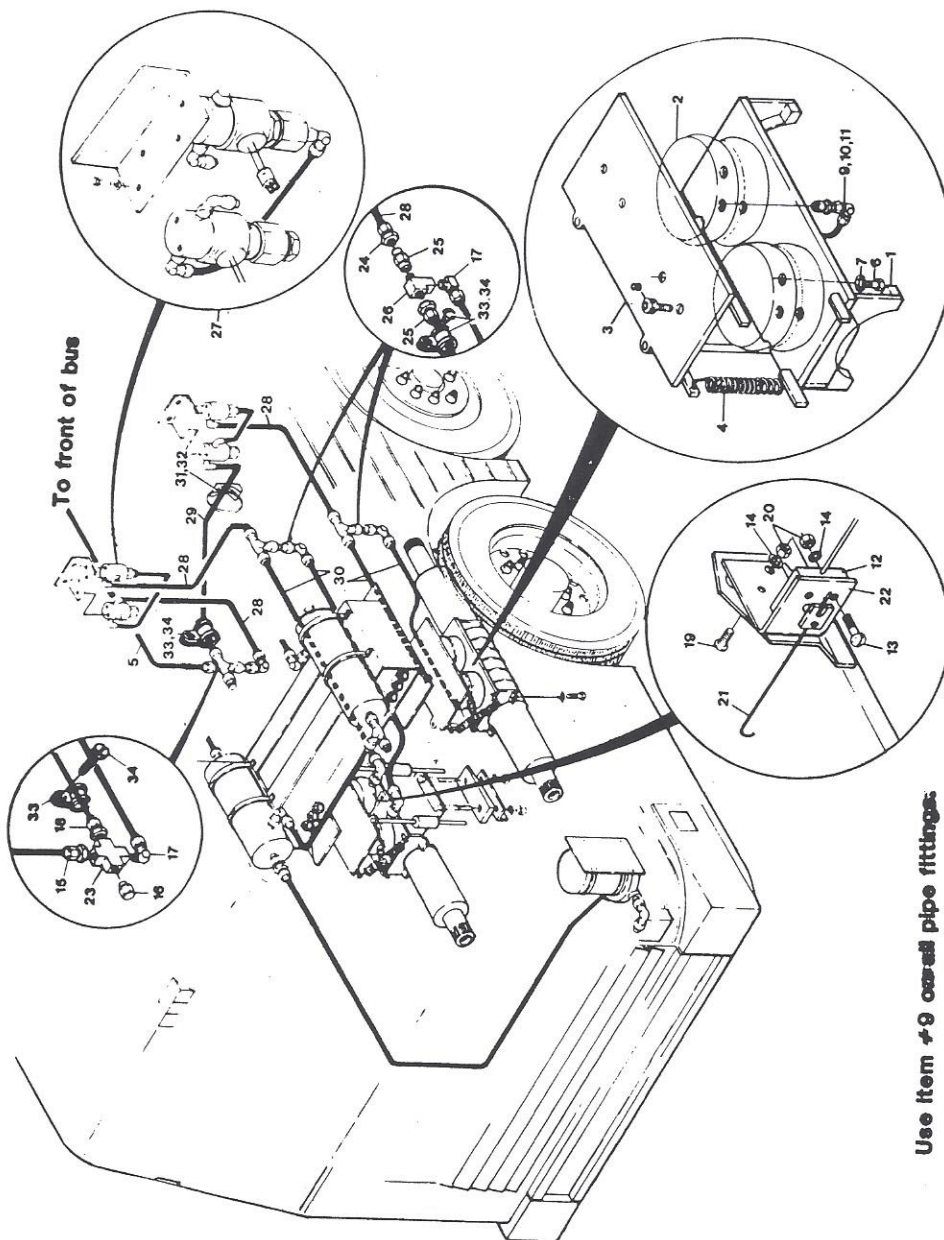
MODEL 15 MHO SERIAL NUMBERS:
70096 - FORWARD



Leveling System — Front Suspension Assy.
Model 15

ITEM	PART NUMBER	DESCRIPTION	QTY.	
		Leveling System — Front Suspension Model 15		
Ref.	159-1236-500	Leveling System Assembly (I.P.B. 12-115-MHO)		
Ref.	159-0100-513	Leveling System - Front Suspension	2	
1.	159-0100-402	Upper Arm Air Bag Support Assembly	1	
2.	159-0100-403	Top Plate Assembly	1	
3.	154-1236-002	Air Bag (Front Wheel)	1	
4.	154-1236-003	Spring	4	
5.	159-1015-513	Miniature Enclosure Switch Assy.	1	
6.	BS-4511-004	Lockwasher #10	6	
7.	BS-4135-204	Screw #10 - 24 x 3.75	6	
8.	BS-4511-008	Lockwasher 3/8"	6	
9.	BS-2527-109	Pipe Sealant - Teflon	AR	
10.	BS-5232-020	Elbow - 45°	1	
11.	BS-4158-206	Bolt, Hex 3/8"	2	
12.	BS-4153-032	Screw, Flat Head SKT 3/8" x 3/4" - 16 UNC	2	
13.	BS-6881-202	Connector 1/4 ODT	2	
14.	159-0200-060	Microswitch Bracket	1	
15.	159-0100-040	Lever Wire	1	
16.	BS-4135-208	Bolt, #10-24 Hex	2	
17.	BS-4202-059	Nut, #10-24 UNC Hex	4	
18.	BS-6881-202	Fitting 1/4"	2	
19.	BS-6881-302	Fitting 3/8"	1	
20.	BS-2625-002	Flex Tube Covering 1/2" x 52" Long	1	
21.	BS-5213-022	Junction Block 4 - Way	1	
22.	BS-6891-302	Elbow, 90° 3/8	2	
23.	159-1236-501	Skinner Valve Assembly (I.P.B. 12-116-MHO)	1	
24.	BS-2700-003	Tubing 3/8" x 52" Lg. (4-Way Block to Aux. Tank)	1	
25.	BS-2700-002	Tubing, 1/4" x 25" Lg. (4-Way Block to Each Valve Assy.)	2	
26.	BS-2625-002	Flex Wire Covering 1/2" x 29" Lg. (Valve Assy. to Each Airbag	2	
27.	BS-2700-002	Tubing, 1/4 x 29" Lg. (Valve Assembly to Each Airbag) ...	2	
28.	BS-4535-103	Clamp	2	
29.	BS-4199-104	Screw, Self Tapping	2	
30.	159-1217-902	Auxiliary Tank Installation (I.P.B. 12-114-15)	Ref.	

MODEL 15 MHO SERIAL NUMBERS:
70096 - FORWARD



Use item #8 over pipe fittings.

Drive Axle Leveling System
Model 15

ITEM	PART NUMBER	DESCRIPTION	QTY.	
		Drive Axle Assembly — Leveling System Model 15		
Ref.	159-1236-500	Leveling System Assy.	1	
Ref.	159-0200-501	Drive Axle Air Bag Leveling System	1	
1.	159-0200-403	Lower Mounting Plate Weldment	1	
2.	154-1236-001	Air Bag, Drive Axle	2	
3.	159-0200-404	Upper Bracket Mounting Plate	1	
4.	154-1236-003	Spring	4	
5.	BS-2700-003	Tubing, 3/8" x 275.00"	1	
6.	BS-4158-207	Bolts - Hex 3/8" - 16 UNC x .875"	4	
7.	BS-4511-008	Lockwasher - 3/8 CAD Plated	4	
8.	BS-4153-032	Flat Head Socket Screw 3/8" x 3/4" x 16 UNC	4	
9.	BS-2500-013	Pipe Sealant, Teflon	AR	
10.	BS-5232-020	Elbow - 45° Ext. Pipe	2	
11.	BS-6881-202	Connector, Male	2	
12.	159-1015-513	Miniature Encl. Switch Assembly	1	
13.	BS-4135-208	Screw, #10 - 24 x 1.0"	2	
14.	BS-4511-004	Lockwasher #10 HLCL	4	
15.	BS-6881-302	Adapter 3/8"	1	
16.	BS-5213-172	Plug	1	
17.	BS-6891-202	90° Elbow	2	
18.	BS-6881-202	Adapter	1	
19.	BS-4135-204	Screw PNHSL #10 - 24 x 5.00	2	
20.	BS-4202-059	Nut, Hex 10 - 24 UNC	4	
21.	159-0100-040	Lever Wire	1	
22.	159-0200-059	Microswitch Support Bracket	1	
23.	BS-5213-022	Cross, Junction Block	1	
24.	BS-6881-201	Adapter, 1/4"	1	
25.	BS-5213-331	Adapter, Coupling 1/4"	2	
26.	BS-5213-221	Tee Coupling 1/4"	1	
27.	159-1236-501	Skinner Valves Assembly (I.P.B. 12-116-MHO)	2	
28.	BS-2700-002	Tubing, 1/4" x 23" Long	3	
29.	BS-2700-002	Tubing, 1/4" x 50" Long	1	
30.	BS-2700-002	Tubing, 1/4" x 28" Long	4	
31.	054-1075-001	Tie, Cable	8	
32.	BS-4534-001	Tie Wrap	8	
33.	BS-4535-103	Clamp	6	
34.	BS-4199-104	Screw, Self Tapping	14	
35.	BS-2700-003	Hose, 3/8" x 275.00"	1	